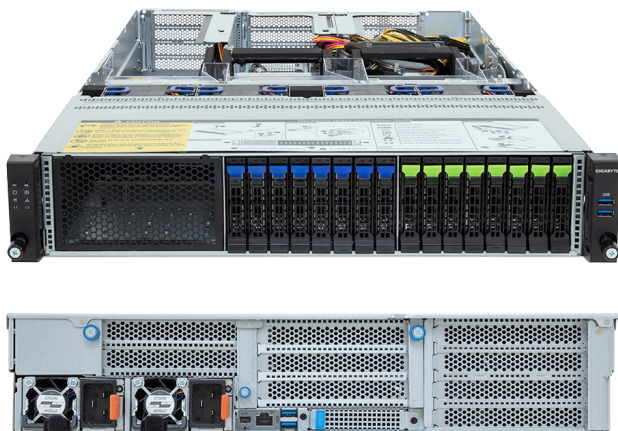
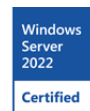


R283-ZF1-AAL1 (Rev. 3.x)

Rack Server - AMD EPYC™ 9005/9004 - 2U DP 4 x PCIe Gen5 GPUs



Key Features

- Supports up to 4 x Dual slot Gen5 GPUs
- Dual AMD EPYC™ 9005/9004 Series Processors
- 12-Channel DDR5 RDIMM, 24 x DIMMs
- 4 x 2.5" Gen5 NVMe/SATA/SAS-4 hot-swap bays
- 4 x 2.5" Gen5 NVMe hot-swap bays
- 8 x 2.5" SATA/SAS-4 hot-swap bays
- 4 x FHFL PCIe Gen5 x16 for GPUs
- 1 x FHHL PCIe Gen5 x16
- 1 x OCP NIC 3.0 PCIe Gen5 x16
- Dual 2700 W 80 PLUS Titanium redundant power supply

Applications

AI Platform, AI Training Server, AI Inference Server, Visual Computing, High-Performance Computing Server, Networks Server, Servers for Hybrid/Private Cloud...

Specification

Dimensions	2U (W438 x H87.5 x D815 mm)	I/O Ports	Front: 2 x USB 3.2 Gen1 Rear: 2 x USB 3.2 Gen1, 1 x Mini-DP, 1 x MLAN
Motherboard	MZF3-GP0	Backplane Board	PCIe Gen5 x4 or SATA 6 Gb/s or SAS-4 24 Gb/s
CPU	AMD EPYC™ 9005 Series Processors AMD EPYC™ 9004 Series Processors Dual processor, cTDP up to 500 W	TPM	1 x TPM header (SPI), Optional TPM 2.0 kit: CTM010
OS Compatibility	OS Support List	Power Supply	Dual 2700 W 80 PLUS Titanium redundant power supply AC Input: 100-240 V *The system power supply requires C19 power cord.
Socket	2 x LGA 6096 (Socket SP5)	System Management	ASPEED® AST2600 Baseboard Management Controller GIGABYTE Management Console web interface
Chipset	System on Chip	System Fans	1 x 40x40x28mm 4 x 80x80x56mm
Memory	12-Channel DDR5 RDIMM, 24 x DIMMs [EPYC 9005] Up to 6400 MT/s [EPYC 9004] Up to 4800 MT/s	Operating Properties	Operating: 10°C to 30°C, 8% to 80% (non-condensing) Non-operating: -40°C to 60°C, 20% to 95% (non-condensing)
LAN	1 x 10/100/1000 Mb/s Management LAN	Packaging Content	1 x R283-ZF1-AAL1 2 x CPU heatsinks 1 x Mini-DP to D-Sub cable 1 x GPU power cable (16-pin, 150mm) 1 x GPU power cable (16-pin, 250mm) 1 x GPU power cable (16-pin, 450mm) 1 x GPU power cable (16-pin, 550mm) 1 x 2-Section Rail kit
Video	Integrated in ASPEED® AST2600 - 1 x Mini-DP	Ordering Part Numbers	6NR283ZF1DR000ACL1*
Storage	Front hot-swap: 4 x 2.5" Gen5 NVMe/SATA/SAS-4 [1] 4 x 2.5" Gen5 NVMe 8 x 2.5" SATA/SAS-4 [1] [1] SAS card is required to support SAS drives.	Optional Parts	- 3-Section Rail kit (Supports CMA): 25HB2-A56121-K0R - Cable Management Arm: 25HB1-R18300-K0R
RAID	Require RAID add-in cards		
PCIe Expansion Slots	4 x FHFL PCIe Gen5 x16, for GPUs 1 x FHHL PCIe Gen5 x16 1 x OCP NIC 3.0 PCIe Gen5 x16, Support NCSI		



Learn more at: <https://www.gigabyte.com/Enterprise>

* All specifications are subject to change without notice. Please visit our website for the latest information.

* All trademarks and logos are the properties of their respective holders.

© 2026 Giga Computing Technology Co., Ltd. All rights reserved.

Last updated: Mar 31, 2026

Designed by

